

SELBORNE, OAKHANGER And BLACKMOOR

St Matthew's Primary School

Proposal Number Three

The entrance to the school is located on Drift Road, a long straight road with good sightlines. There is a slight hill on the northbound approach (Figures 1 and 2).

HBA proposed to develop a strong school entrance place with measures to discourage parking in the immediate vicinity and with recognizable features associated with the school. HBA suggest that changes at the school entrance will provide an opportunity for the alignment of the carriageway to be offset to break the straight ahead nature of the road. It also suggests that defining parking would also help to visually narrow Drift Road to help reduce the speed context.



Figure 1. Drift Road looking west



Figure 2. Drift Road looking east

Technical note

We concur with these suggestions but are of the opinion that the changes should be constructed using traditional kerbs and surfacing to minimise potential distraction to drivers. Therefore, using HBA concepts as a basis we suggest the following (drawing number ATK-HGN-SEL-DR-D-0003):

- Raise and resurface the footway immediately outside the entrance to provide improved facilities for parents who are waiting;
- Narrow the carriageway outside the school to provide a "core" lane 5.0m wide that will serve to slow traffic speeds, highlight the school entrance and offset the straight carriageway alignment;
- Introduce low level planting to provide a barrier between pedestrians and traffic (see examples below in Figure 3);
- Introduce "School Zone" signs on the approaches to the school, to advise drivers to slow down;
- Provide inset parking bays to formalise parking away from the immediate school entrance;
- Extend the raised table across the "service entrance" to the school;
- Lower the existing school warning and 30mph signs as well as wig wags located on the southwest approach to the school, Figure 4 in accordance with Traffic Signs Regulations and General Directions 2016, Chapter 4.
- Consideration should also be given to replacing the existing signs with bigger ones based on recorded red 85th percentile speeds; and
- Cut back overhanging branches and vegetation to improve sign visibility.



Figure 3. Example of Planted Verge



Figure 4. Existing School Warning Signs on drift Road

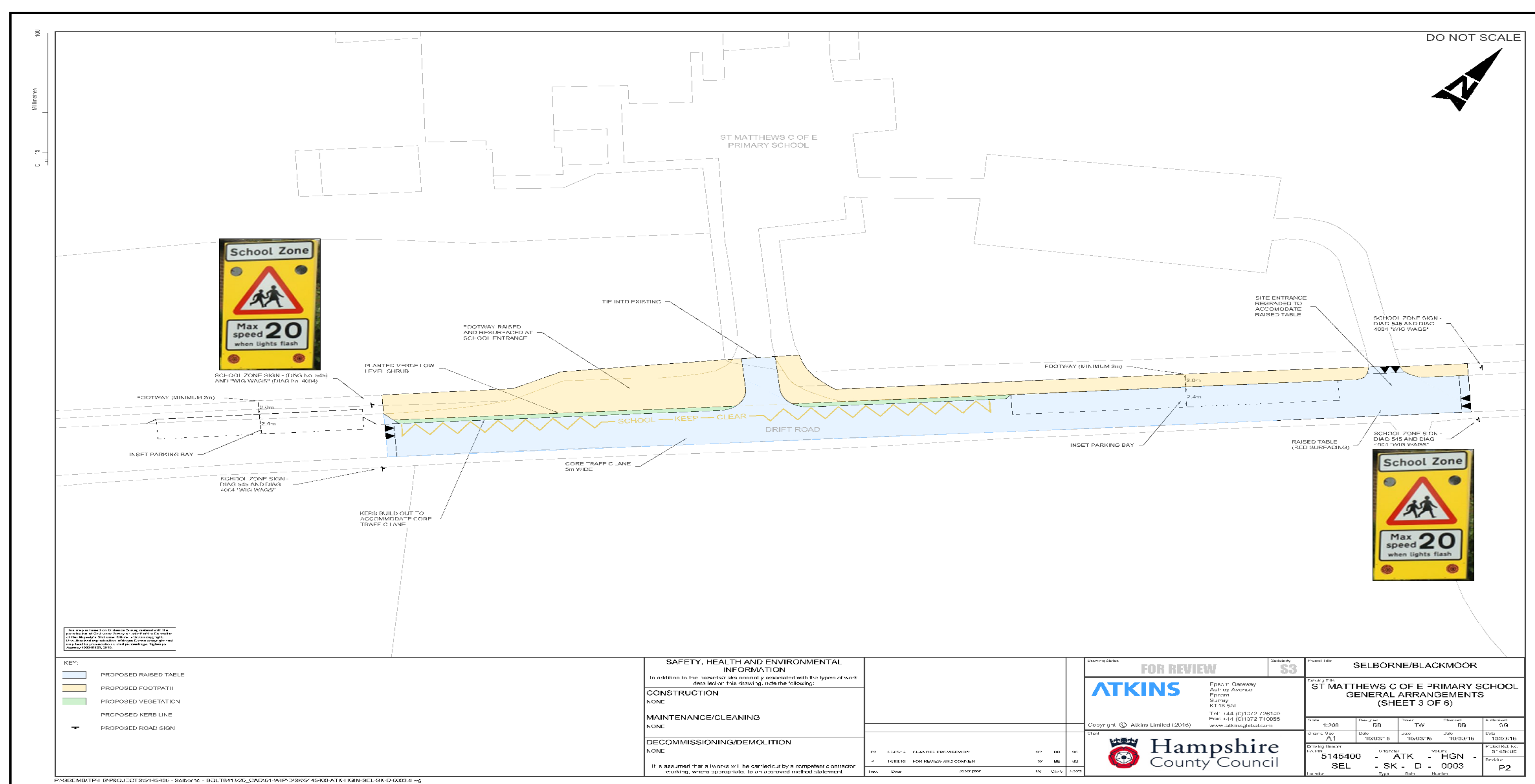


Figure 5. St Matthew Primary School General Arrangement